

HISPANIC AMERICANS

2014 STATISTICAL PROFILE FOR KANSAS

PEOPLE

317,061

The number of Hispanic Kansans as of April 1, 2012. This is 10.9% of the state's population. Hispanic Americans account for 16.9% of the total U.S. population.

253,822

There are 253,822 more Hispanic Americans in Kansas today than in 1980. That is a 401% increase, compared to a 22.1% increase in the total number of Kansans during that period.

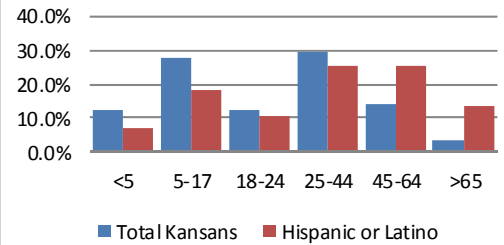
496,030

The projected Hispanic population in Kansas in 2030, according to Woods and Poole Economics, Inc.

2,020

The number of Hispanic Americans in Kansas who serve in the armed forces. This is 1.0% of those over the age of 16, compared with 0.8% for the total Kansas population. There are 6,031 Hispanic American veterans living in Kansas.

Percent in Age Groups



39.9%

The percent of the Hispanic population under age 18, compared to 25.1% of the general Kansas population.

23.5

The median age of Hispanic persons in Kansas. 36.0 years is the median age for all Kansans, and 37.4 for the United States.

11,871

The number of Hispanic Kansans over 65 years of age, 54.5% of whom are women.

TOP 5 CITIES BY HISPANIC OR LATINO POPULATION

	2010		2000
Wichita	58,348 (15.3)	Wichita	33,112 (9.6)
Kansas City	40,522 (27.8)	Kansas City	24,639 (16.8)
Topeka	17,026 (13.4)	Garden City	12,492 (43.9)
Dodge City	15,730 (57.5)	Topeka	10,847 (8.9)
Garden City	12,946 (48.6)	Dodge City	10,793 (42.9)

TOP 5 COUNTIES BY HISPANIC OR LATINO POPULATION

	2012		2000
Sedgwick	67,595 (13.4)	Sedgwick	36,397 (8.0)
Wyandotte	42,811 (26.9)	Wyandotte	22,257 (16.0)
Johnson	41,349 (7.4)	Johnson	17,957 (4.0)
Shawnee	20,244 (11.3)	Finney	17,548 (43.3)
Ford	18,120 (52.1)	Shawnee	12,330 (7.3)

CHILDREN AND FAMILIES

78,362

Hispanic households in Kansas, with an average of 3.52 people per household.

52.4%

Percentage Hispanic married couple families. Single mothers make up 16.6% of families.

48.9%

Percentage of Hispanic Kansans over the age of 15 who are married.

33.0%

Percentage of Hispanic children in Kansas under 18 years who live in poverty, compared to 19.0% for the general state population.

**STATE DATA CENTER
AT THE STATE
LIBRARY OF KANSAS**

State Capitol Building
Room 312-W
300 SW 10th Avenue
Topeka, KS 66612

Tel: 785-296-2008
E-mail: peter.haxton@library.ks.gov

**KANSAS HISPANIC &
LATINO AMERICAN
AFFAIRS COMMISSION**

900 SW Jackson
Suite 100
Topeka, KS 66612

Tel: 785-296-3465
E-mail: khlaac@ks.gov

WERE ON THE WEB!
WWW.KSLIB.INFO/SDC
WWW.KHLAAC.ORG

Data Sources, unless otherwise noted:

U.S. Census Bureau: American Community Survey 2012 Single Year Estimates, Census 2000, Census 2010, U.S. Census Bureau Annual Estimates Program July 1, 2012 .

MONEY MATTERS

28.5%

The estimate for the percentage of Hispanic Kansans who have no health insurance coverage, compared to 12.6% of all Kansans.

\$38,578

Median income for Hispanic households, the median income for the state is \$50,241.

52.8%

Percentage of Hispanic Americans in Kansas who own their home.

5,774

In 2007, the number of Hispanic owned businesses in Kansas, employing 6,851 people. This accounts for 2.4% of all Kansas firms, compared to 8.3% of U.S. Businesses.

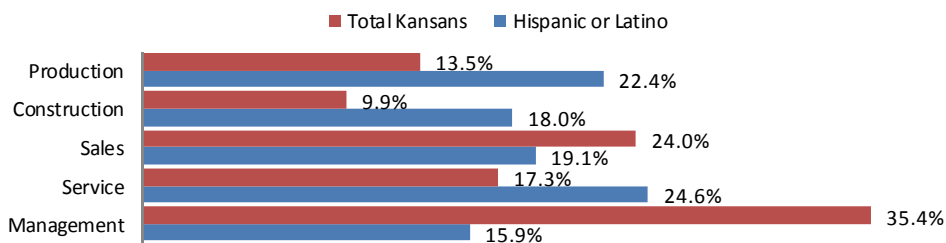
\$82,200

The median value of their homes. The overall median value for homes in Kansas is \$130,100.

\$1,056,826,000

Total receipts from those businesses in 2007.

Percent in Occupations



EDUCATION

80.2%

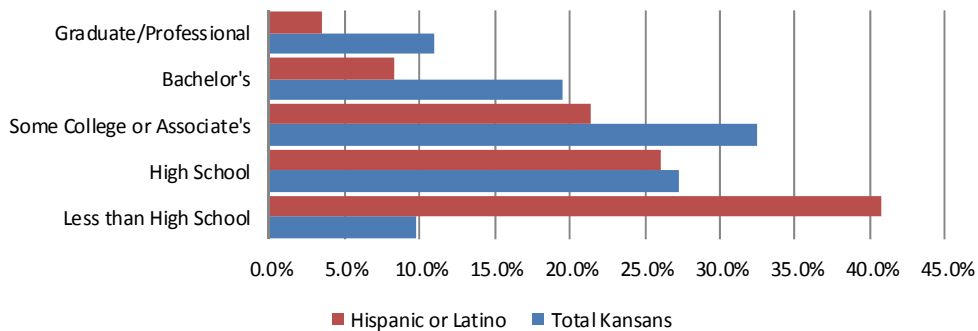
The graduation rate for Hispanic American high school students in 2012-13 school year.

17.6%

Percentage of students enrolled in Kansas K-12 schools who are Hispanic American.

Source: Kansas State Department of Education

Educational Attainment



11.9%

Percentage of Hispanic Americans in Kansas who hold a bachelor's degree or higher.

16.2%

The percent of Hispanic American Kansans enrolled in college or graduate school.

5.4%

The percentage of students in Kansas Regents institutions who are Hispanic.

10.4% / 13.4%

The percentage of Hispanic American men and women who hold bachelor's degrees or higher.

Kansas Board of Regents *State University Data Book*, 2013.